

# THE Bayside

3,478 SQ.FT. |  
ELEVATION A

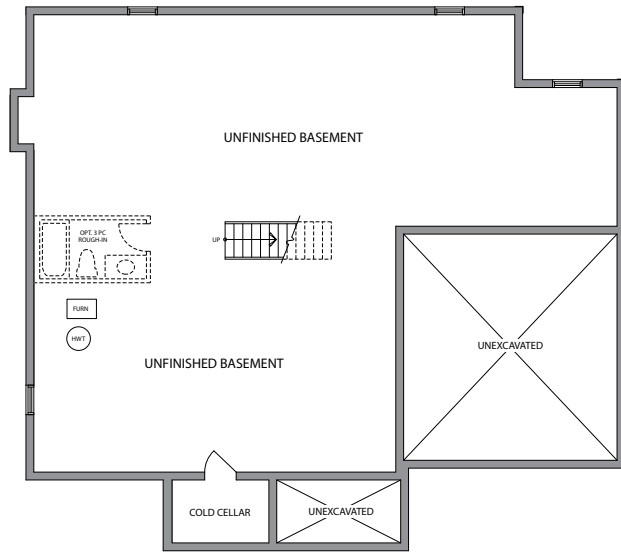
# THE Bayside

3,454 SQ.FT. |  
ELEVATION B

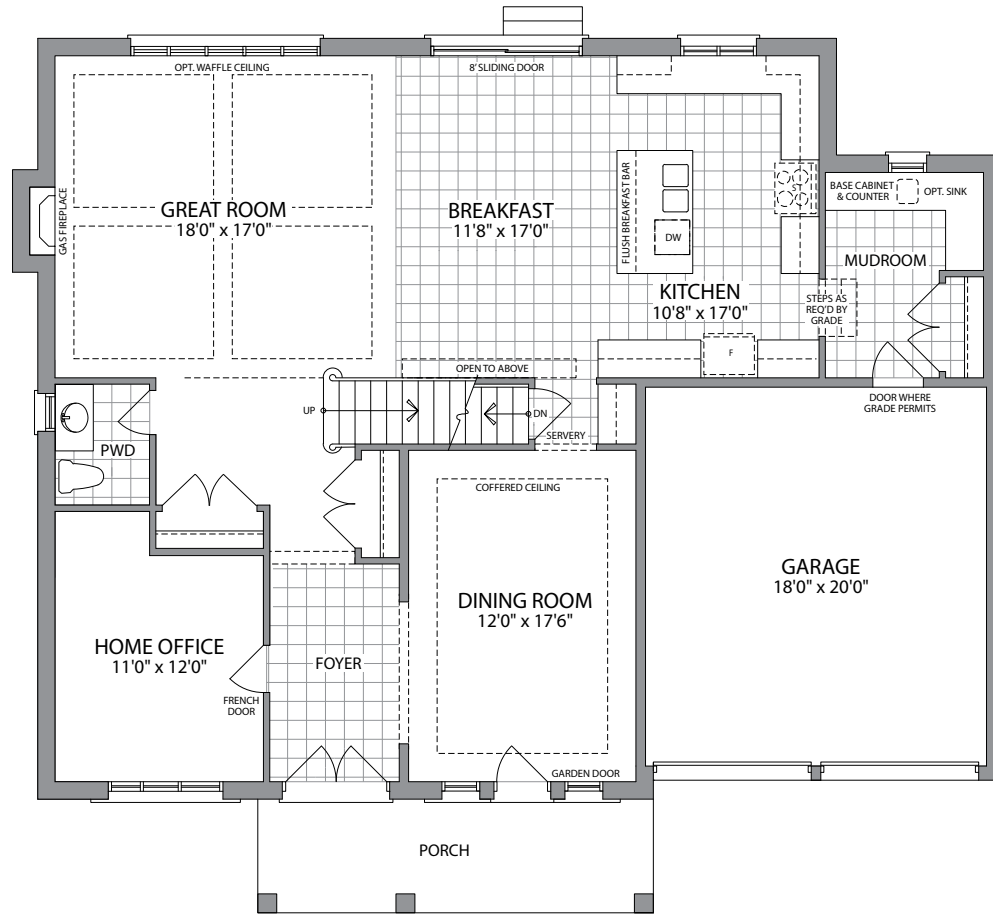


ELEVATION A 3,478 SQ.FT.  
ELEVATION B 3,454 SQ.FT.

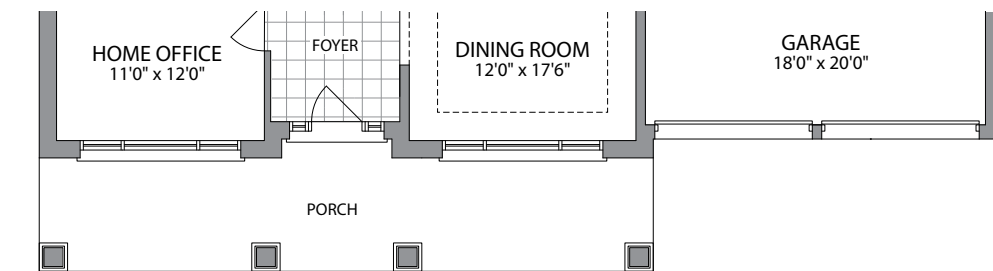
# THE Bayside



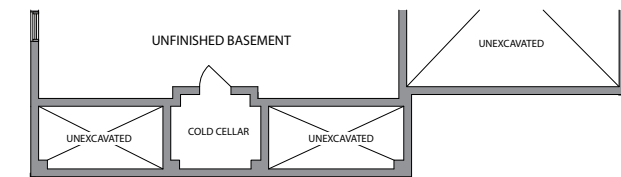
**BASEMENT ELEVATION A**



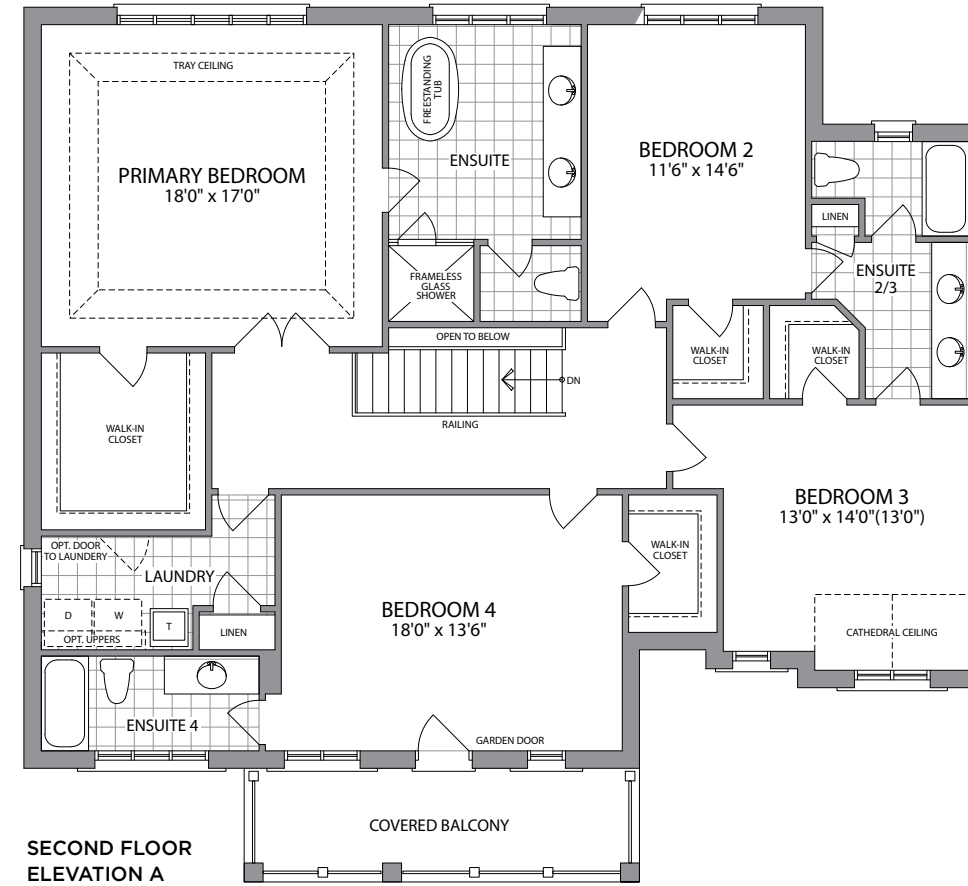
**GROUND FLOOR ELEVATION A**



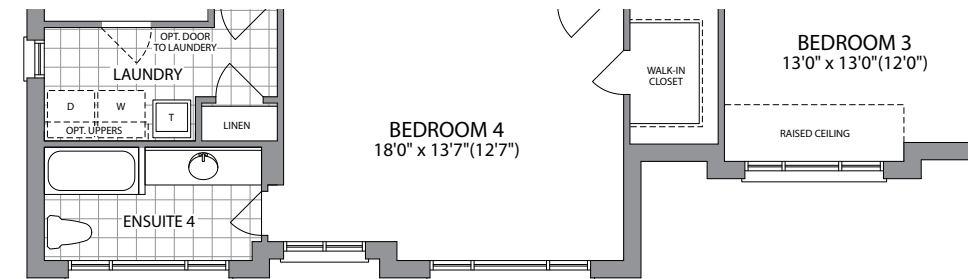
**GROUND FLOOR ELEVATION B**



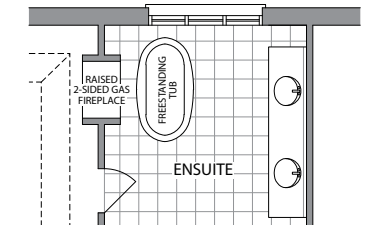
**BASEMENT ELEVATION B**



**SECOND FLOOR ELEVATION A**



**SECOND FLOOR ELEVATION B**



**OPTIONAL RAISED 2 SIDED FIREPLACE**

\*All drawings are artist's concept and may vary slightly from the final product. E. & O. E. Actual usable floor space may vary from stated area and square footage has been calculated based on usable living space according to Taron rules and does not include garage or basement areas. Drawings may show optional features which may not be included in the base price. Bulkheads and box outs may be required as chases for plumbing and mechanical. Garage man door location may vary subject to grade. The number of interior and exterior steps may vary from what's shown based on individual lot/plot grading conditions. April, 2026 (60-1)



# THE Trailside

3,880 SQ.FT. |  
ELEVATION A

# THE Trailside

3,867 SQ.FT. |  
ELEVATION B



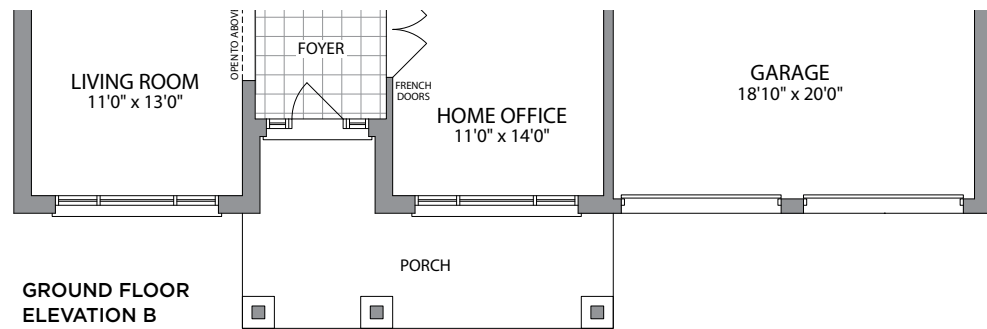
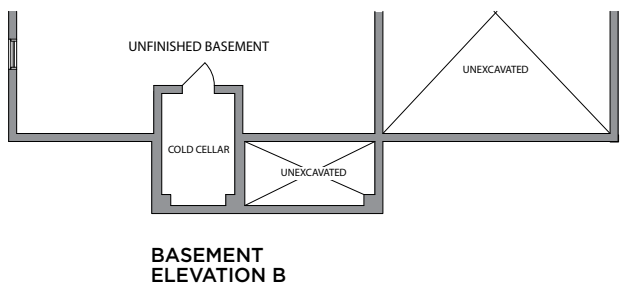
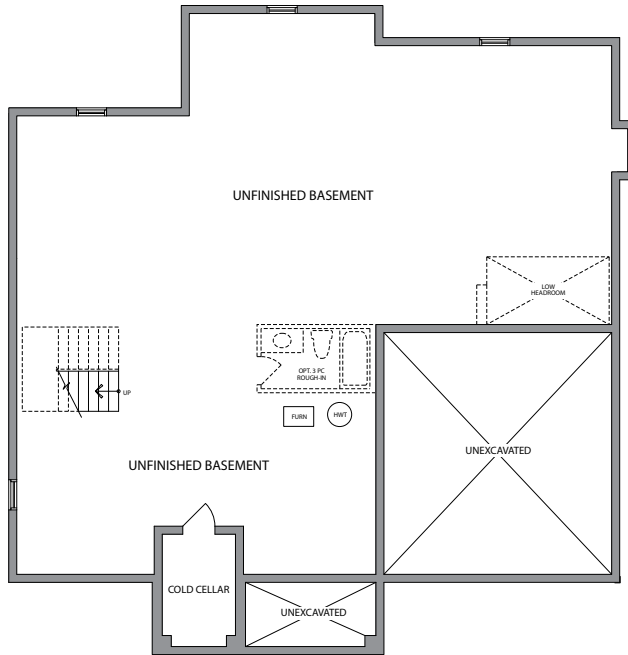
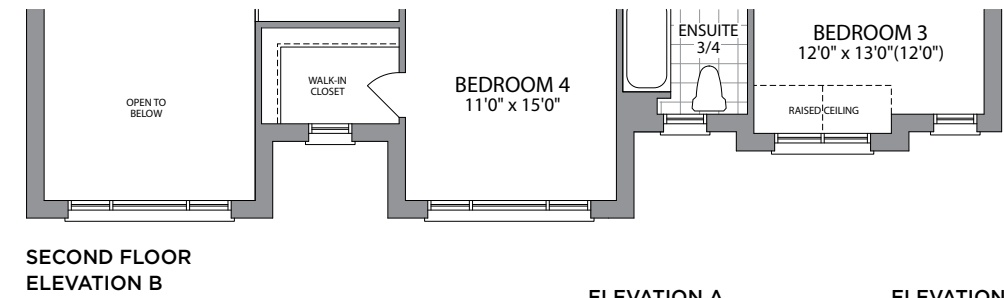
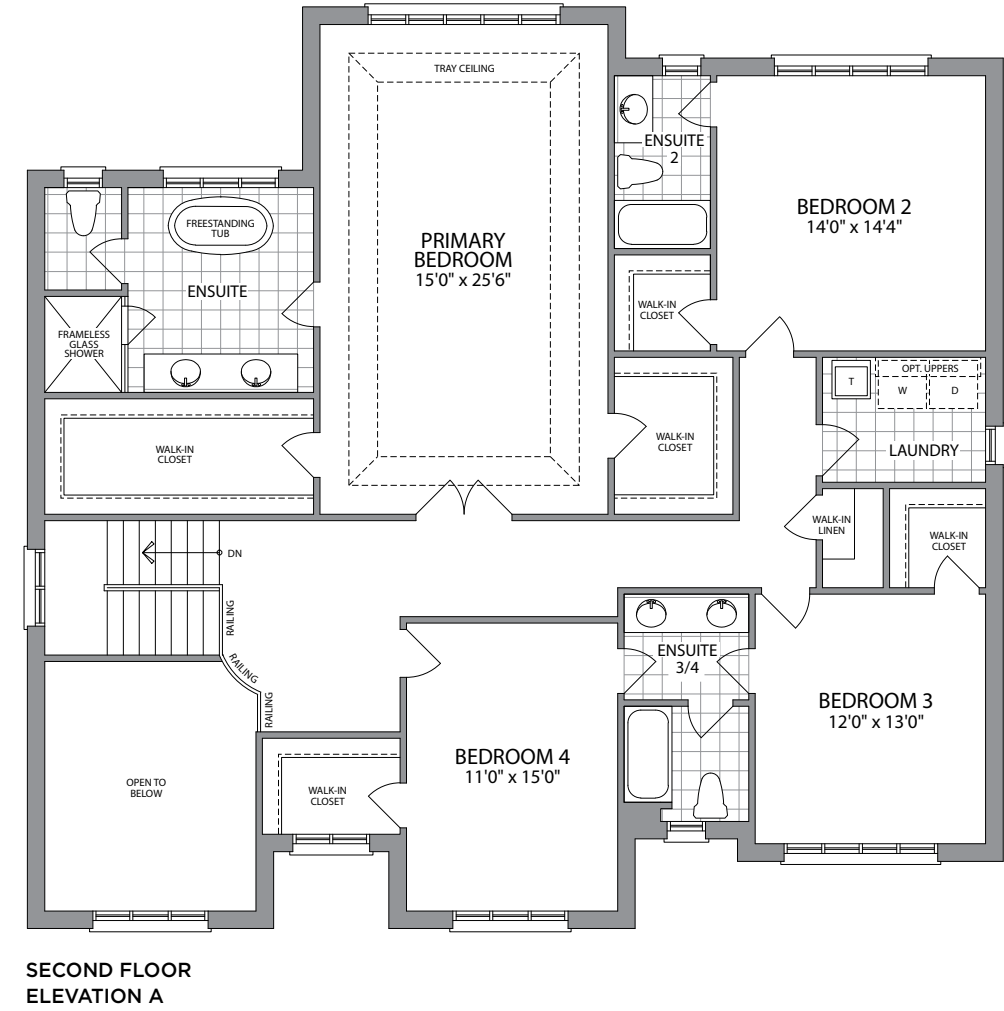
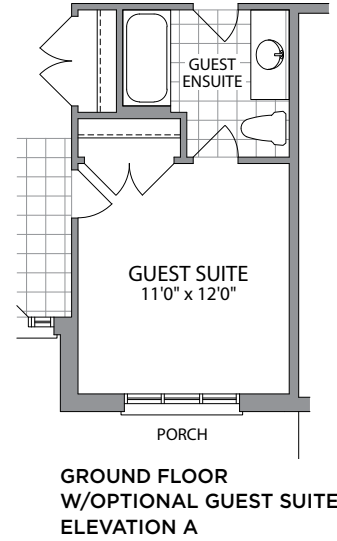
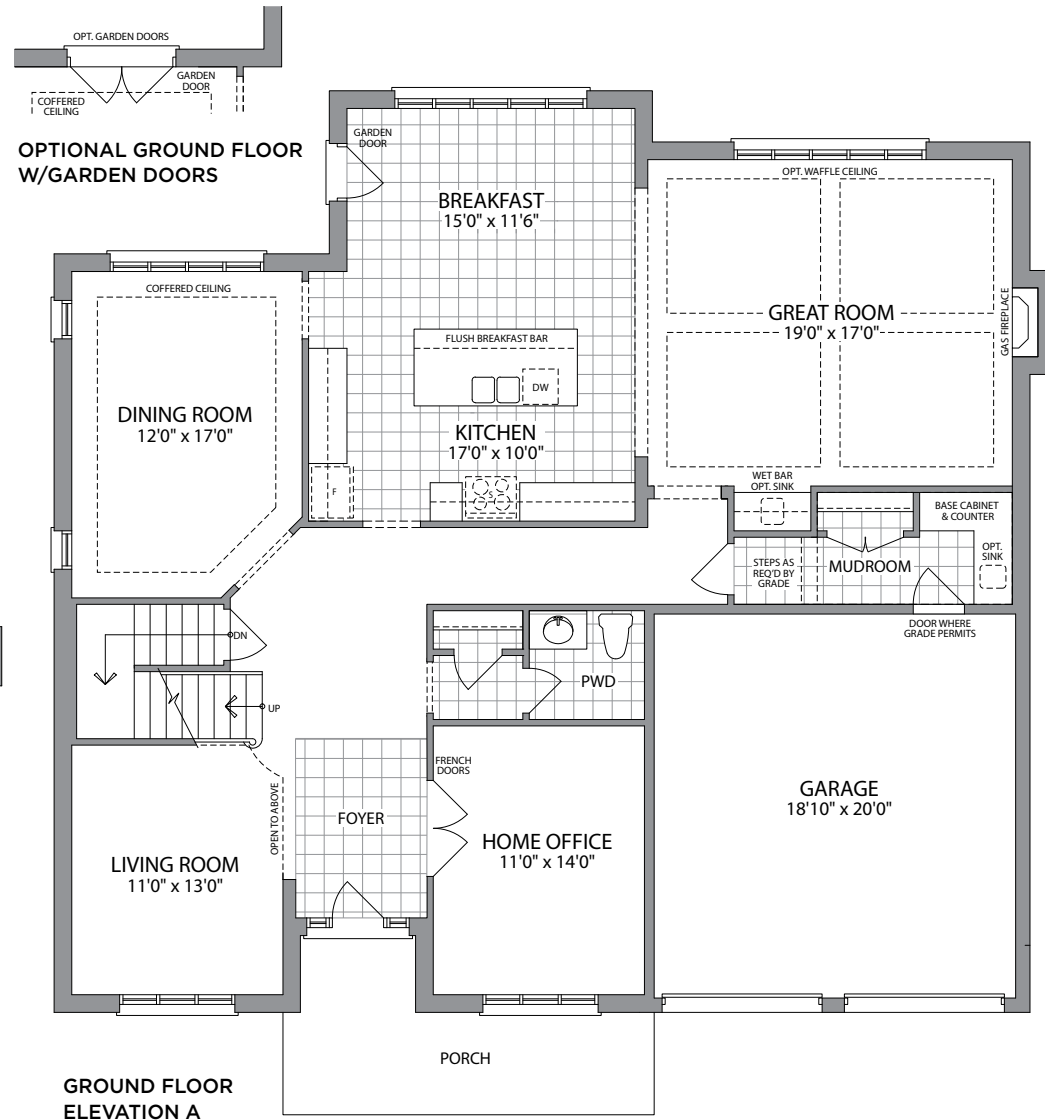
Artist's Concept



Artist's Concept

ELEVATION A 3,880 SQ.FT.  
ELEVATION B 3,867 SQ.FT.

# THE Trailside



\*All drawings are artist's concept and may vary slightly from the final product. E. & O. E. Actual usable floor space may vary from stated area and square footage has been calculated based on usable living space according to Taron rules and does not include garage or basement areas. Drawings may show optional features which may not be included in the base price. Bulkheads and box outs may be required as chases for plumbing and mechanical. Garage man door location may vary subject to grade. The number of interior and exterior steps may vary from what's shown based on individual lot/plot grading conditions. April, 2026 (60-2)

# THE Catalina

4,074 SQ.FT. |  
ELEVATION A

# THE Catalina

4,122 SQ.FT. |  
ELEVATION B



Artist's Concept



Artist's Concept



# THE Sandpiper

4,224 SQ.FT. |  
ELEVATION A

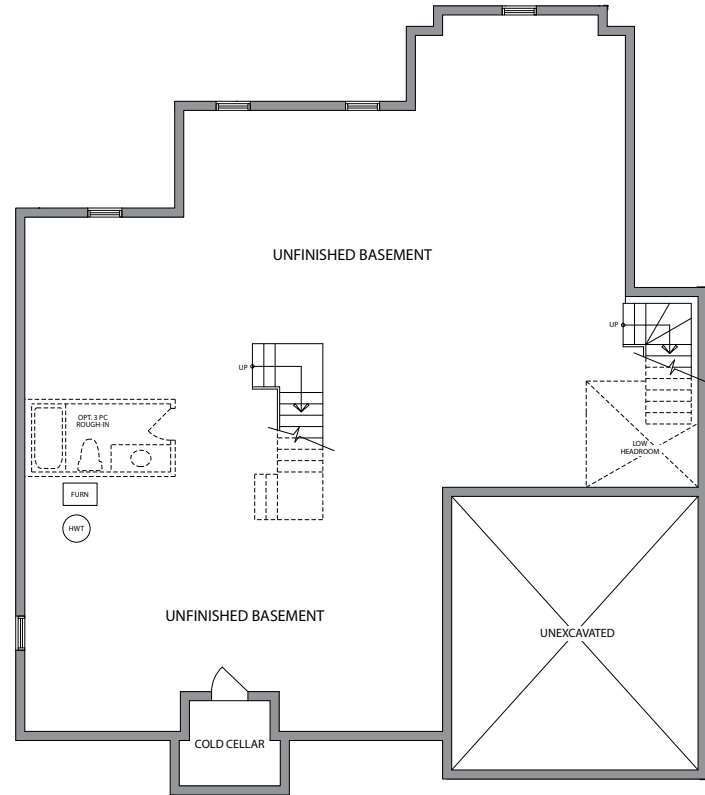
# THE Sandpiper

4,224 SQ.FT. |  
ELEVATION B

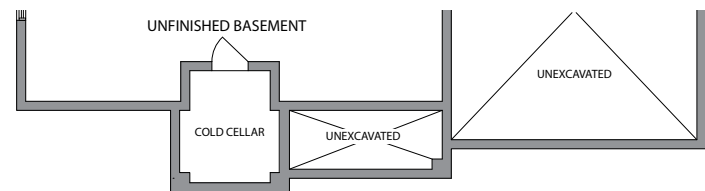


ELEVATION A 4,224 SQ.FT.  
ELEVATION B 4,224 SQ.FT.

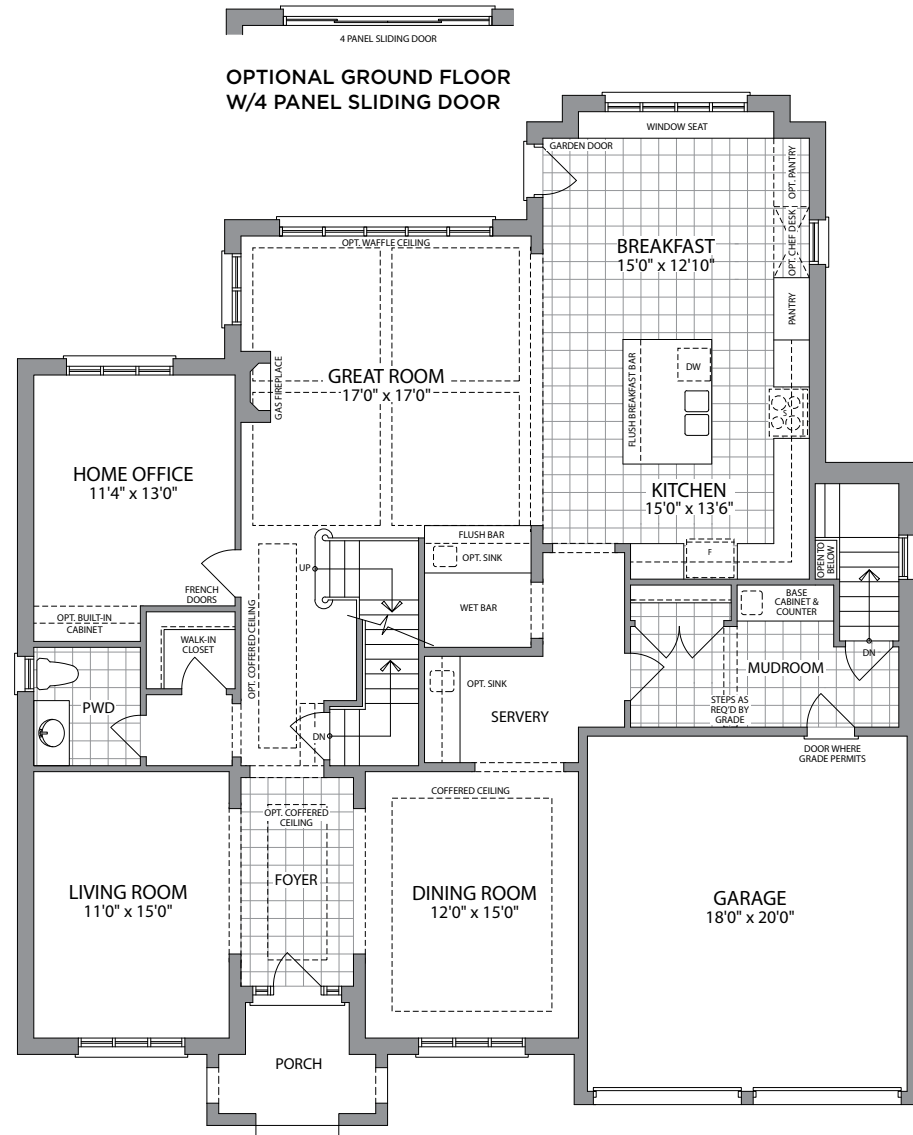
# THE Sandpiper



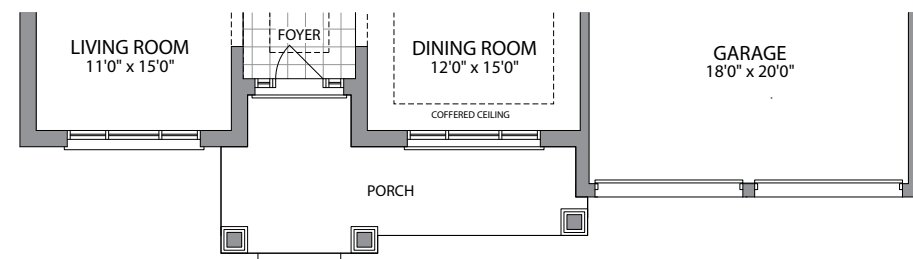
**BASEMENT ELEVATION A**



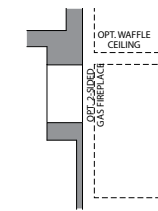
**BASEMENT ELEVATION B**



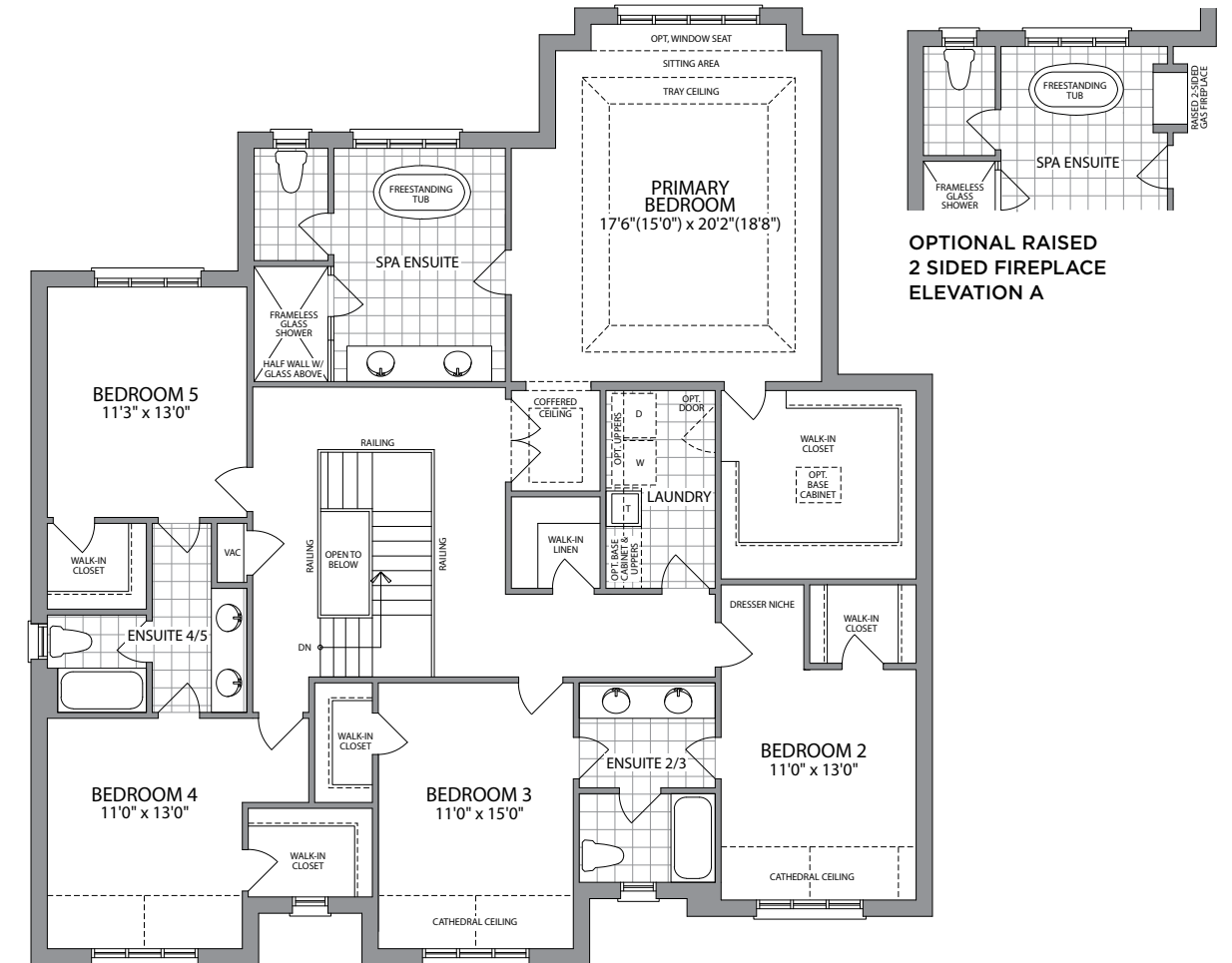
**GROUND FLOOR ELEVATION A**



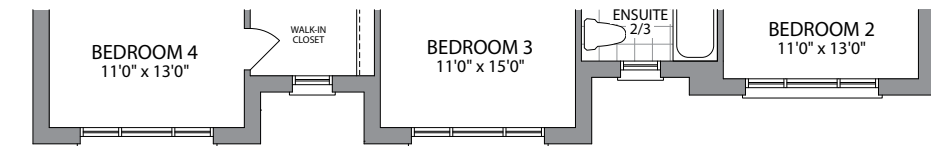
**GROUND FLOOR ELEVATION B**



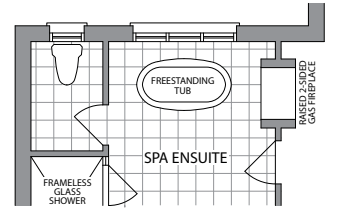
**OPTIONAL 2 SIDED FIREPLACE ELEVATION A**



**SECOND FLOOR ELEVATION A**



**SECOND FLOOR ELEVATION B**



**OPTIONAL RAISED 2 SIDED FIREPLACE ELEVATION A**

**ELEVATION A**

**ELEVATION B**



\*All drawings are artist's concept and may vary slightly from the final product. E. & O. E. Actual usable floor space may vary from stated area and square footage has been calculated based on usable living space according to Taron rules and does not include garage or basement areas. Drawings may show optional features which may not be included in the base price. Bulkheads and box outs may be required as chases for plumbing and mechanical. Garage man door location may vary subject to grade. The number of interior and exterior steps may vary from what's shown based on individual lot/plot grading conditions. April, 2026 (60-4)